

SPECTACULAR SAVANNA SMALL QUILT SUPPLEMENT

This guide is for quilters who already have the 2019 version of Spectacular Savanna, which does not include instructions for making a Small Sampler quilt. If you have the current/2024 version of the pattern, you do not need this supplement.

Refer to the directions on this page to subcut **2-1/4 yards of Background Fabric**, such as Kona Palm, **1/8 yard Dark Solid Detail Fabric**, such as Kona Pepper, and **1/4 yard Light Solid Detail Fabric**, such as Kona Snow. As you work, sort the fabrics into 7 bags or bins, one for each of the blocks, and one for the Background Sashing and Borders. The fabric that you cut for the blocks will be further subcut as you piece each block. Right now, we're just dividing it up based on where it will be used in the quilt.

BACKGROUND FABRIC FOR SASHING & BORDERS

Cut 1 strip, 9-1/2" x WOF, and subcut:

- 1 piece A, 9-1/2" x 13-1/2"
- 1 piece B, 8-1/2" x 13-1/2"
- 1 piece I, 8-1/2" x 9"

Cut 1 strip, 6" x WOF, and subcut:

- 1 piece D, 6" x 15"
- 1 piece O, 3-1/2" x 15-1/2"

Cut 1 strip, 3" x WOF, and subcut:

- 1 piece K, 3" x 17"
- 1 piece M, 2" x 15-1/2"

Cut 5 strips, 2-1/2" x WOF. Trim selvages and sew pairs of strips together end-to-end, and subcut:

- 2 pieces P, 2-1/2" x 50-1/2" each
- 2 pieces Q, 2-1/2" x 47-1/2" each

Cut 3 more strips, 2-1/2" x WOF, and subcut:

- 1 piece J, 2-1/2" x 23-1/2"
- 1 piece E, 2-1/2" x 18"
- 1 piece N, 2-1/2" x 15-1/2"
- 1 piece L, 2-1/2" x 14-1/2"
- 1 piece H, 2-1/2" x 11"
- 1 piece G, 1-1/2" x 12-1/2"

Cut 1 strip, 2" x WOF, and subcut:

- 1 piece C, 2" x 19-1/2"
- 1 piece F, 2" x 18"

BACKGROUND FABRIC FOR BLOCKS

For the Elephant block, cut:

- 1 strip, 5" x WOF
- 1 strip, 2-1/2" x WOF

For the Lion block, cut:

- 1 strip, 5-1/2" x WOF

For the Hippo block, cut:

- 1 strip, 2-3/4" x WOF
- 1 strip, 1-1/4" x WOF

For the Giraffe block, cut:

- 1 strip, 3-3/4" x WOF
- 1 strip, 1-1/2" x WOF

For the Zebra block, cut:

- 1 strip, 2" x WOF
- 1 strip, 1-3/4" x WOF

For the Rhino block, cut:

- 1 strip, 3-1/4" x WOF
- 1 strip, 2" x WOF

DARK SOLID DETAIL FABRIC (1/8 yard)

From the 4-1/2" wide 1/8 yard cut, subcut:

- 2 pieces, 4-1/2" x 9" each, for the Lion and Zebra blocks
- 1 piece 4" x 4-1/2", for the Giraffe block
- 3 pieces, 2" x 4-1/2" each, for the Elephant, Hippo, and Rhino blocks

LIGHT SOLID DETAIL FABRIC (1/4 yard)

From the 9" wide 1/4 yard cut, subcut:

- 1 piece, 9" x 21", for Zebra block Fabric 2
- 1 piece, 9" x 10-1/2", for Rhino block
- 1 piece, 4" x 9", for the Elephant block
- 1 piece 2" x 9", for the Hippo block

MAKING THE SMALL SAMPLER QUILT

Make the Blocks

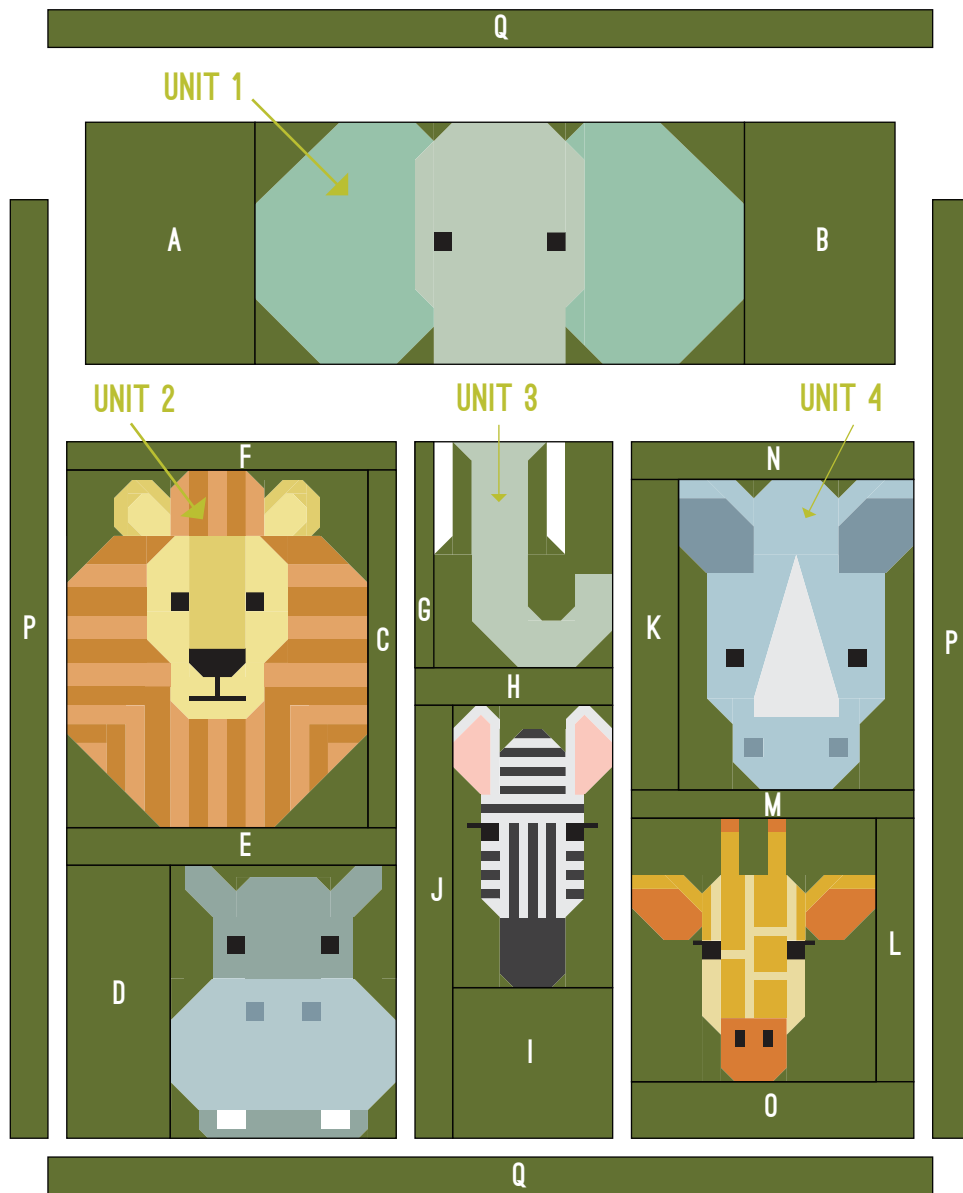
Follow the directions in the Spectacular Savanna pattern to gather and organize colorful fabrics for the blocks. Continue referring to the pattern to make the Elephant Head, Elephant Trunk, Lion, Hippo, Giraffe, Zebra, and Rhino blocks.

Make the Quilt Top

Refer to the diagram on the next page for Steps 1 - 5.

STEP 1 Sew piece A to the left side and piece B to the right side of the Elephant Head to make the 13-1/2" tall x 43-1/2" wide Quilt Top Unit 1.

STEP 2 Sew piece C to the right side of the Lion Block. Sew piece D to the left side of the Hippo Block. Sew together the Lion and Hippo blocks, sewing piece E between them. Sew piece F to the top to make the 18" wide x 37-1/2" tall Quilt Top Unit 2.



Piece	#	Size
BACKGROUND FABRIC		
A	1	9-1/2" x 13-1/2"
B	1	8-1/2" x 13-1/2"
C	1	2" x 19-1/2"
D	1	6" x 15"
E	1	2-1/2" x 18"
F	1	2" x 18"
G	1	1-1/2" x 12-1/2"
H	1	2-1/2" x 11"
I	1	8-1/2" x 9"
J	1	2-1/2" x 23-1/2"
K	1	3" x 17"
L	1	2-1/2" x 14-1/2"
M	1	2" x 15-1/2"
N	1	2-1/2" x 15-1/2"
O	1	3-1/2" x 15-1/2"
P	2	2-1/2" x 50-1/2"
Q	2	2-1/2" x 47-1/2"

STEP 3 Sew piece G to the left side of the Elephant Trunk. Sew piece H to the bottom of the Elephant Trunk. Sew piece I to the bottom of the Zebra block. Sew piece J to the left side of the Zebra block and sew to the bottom of the Elephant Trunk to make the 11" wide x 37-1/2" tall Quilt Top Unit 3.

STEP 4 Sew piece K to the left side of the Rhino block. Sew piece L to the right side of the Giraffe block. Sew together the Rhino and Giraffe blocks, sewing piece M between them. Sew piece N to the top and piece O to the bottom to make the 15-1/2" wide x 37-1/2" tall Quilt Top Unit 4.

STEP 5 Sew together Quilt Top Units 2, 3, and 4. Sew Quilt Top Unit 1 to the top. Sew pieces P to the left and right sides and pieces Q to the top and bottom to finish the 47-1/2" wide x 54-1/2" tall quilt top.

Finish the Quilt

STEP 6 From **3-1/8 yards backing fabric**, cut 2 pieces 55" x WOF. Trim away selvages and sew together, matching long sides. Trim quilt back to 55" x 64".

STEP 7 Sandwich and quilt as desired. From **1/2 yard binding fabric**, cut 6 strips, 2-1/2" x WOF, and bind as desired.